

Remote Document Issuance

Driver's License Issuance or ID Renewal

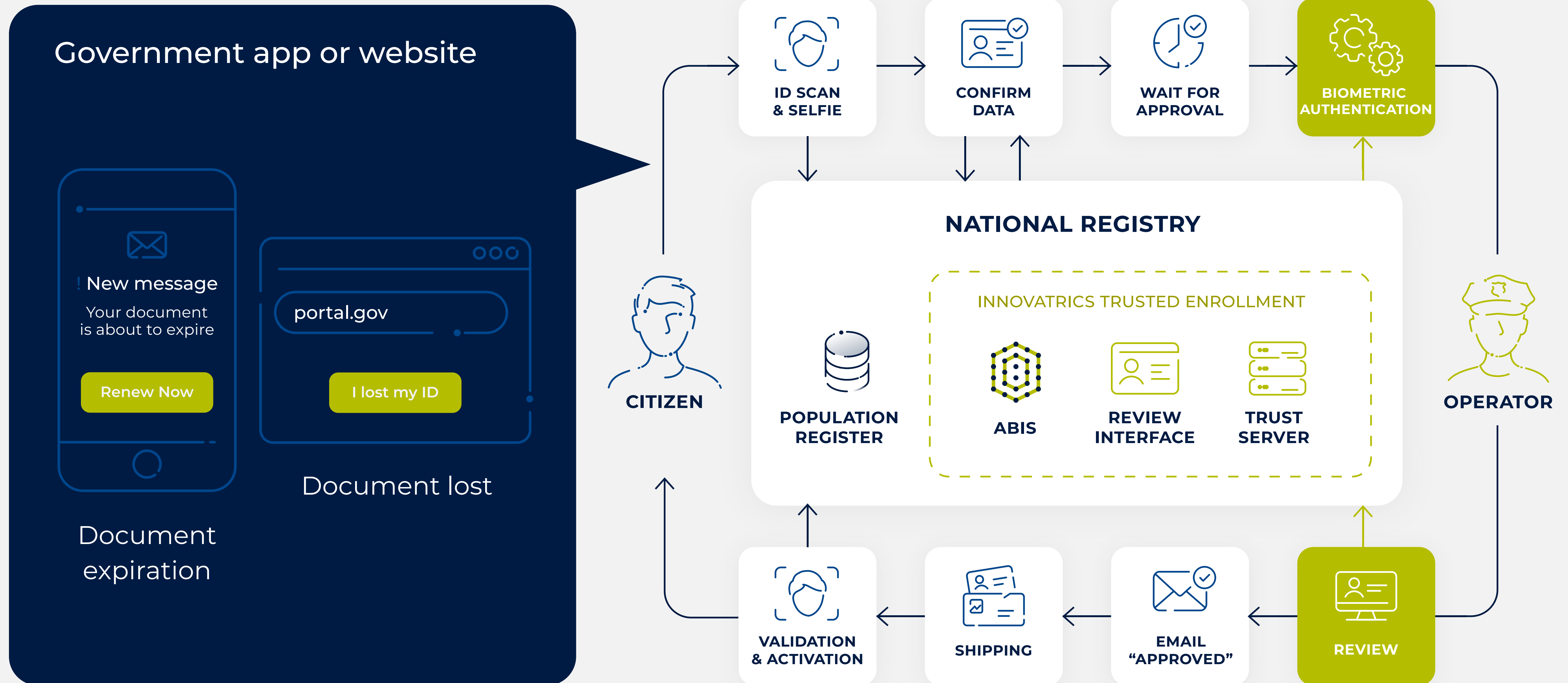


Smartphone

Government Biometric Register

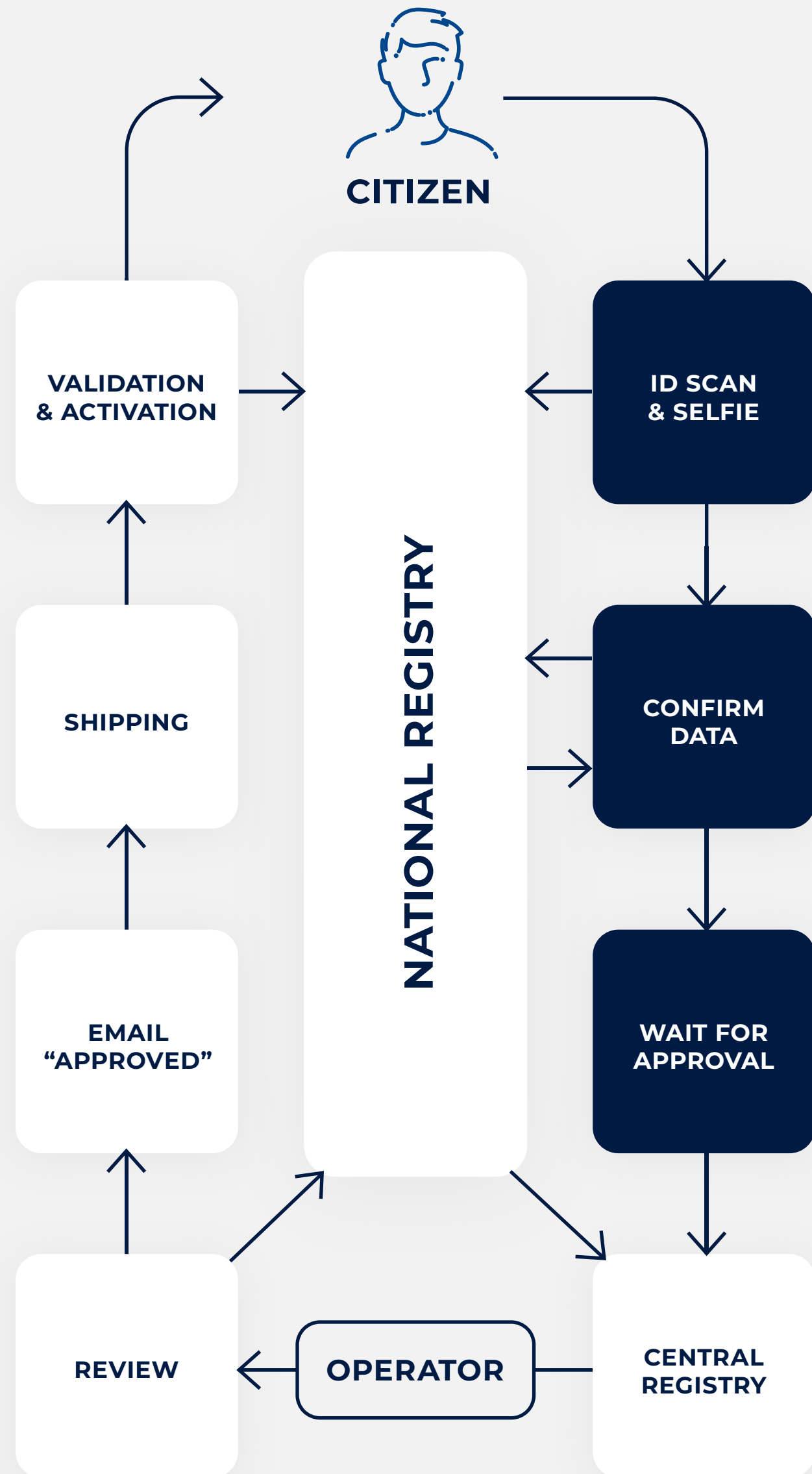
Driver's License Issuance or ID Renewal

Citizen's document and information are already stored in the register



Application Process

Government app or website



Scan ID and **Take a selfie**

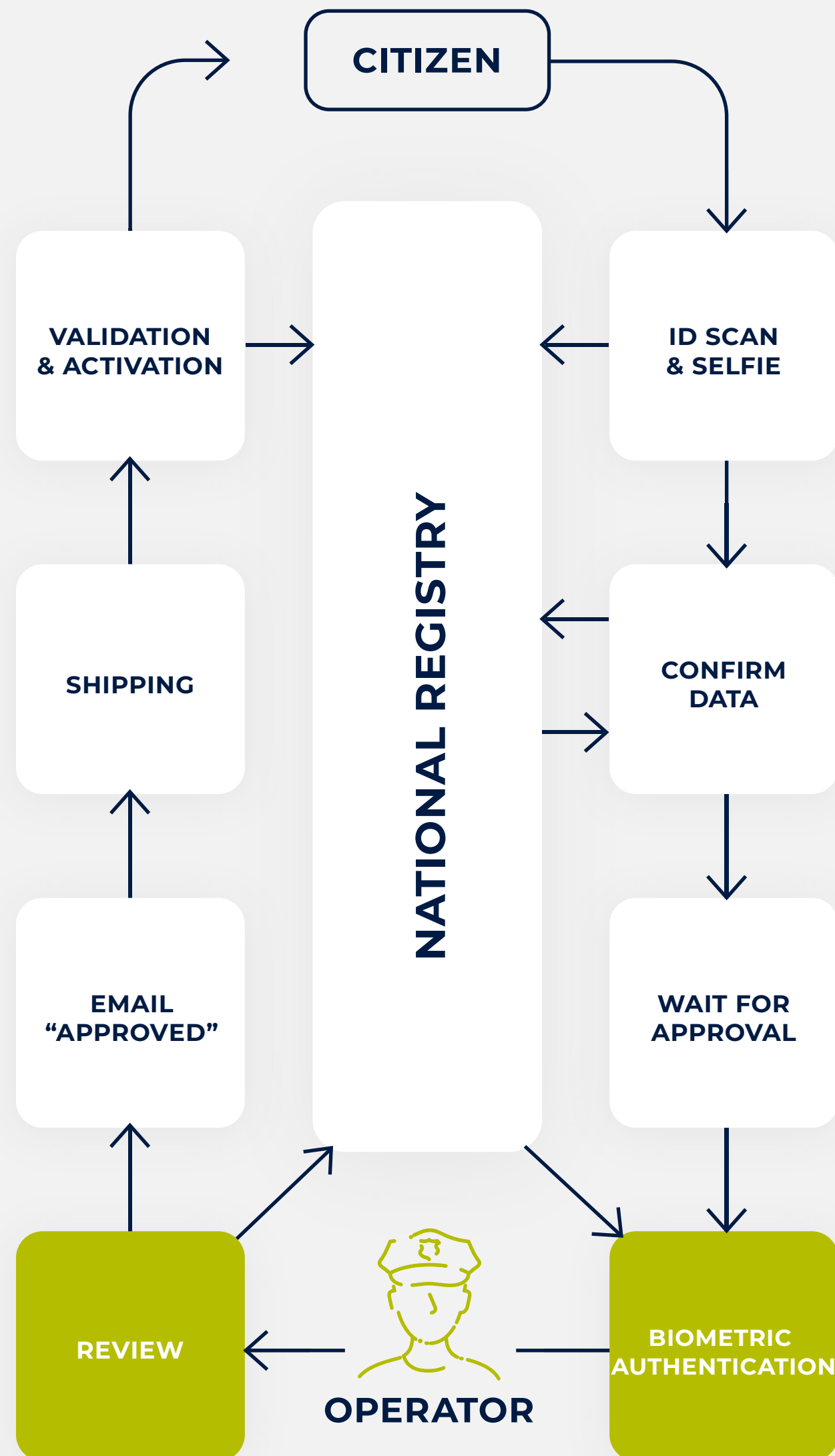
ID data OCR or NFC extraction, facial biometric verification and liveness detection are performed and sent to the National Registry.

- Confirm or correct extracted data
- If needed re-capture or upload ICAO compliant photo

Your application was accepted and waiting for approval.

Application Validation and Review

Innovatrics Trust Server



Data reviewed by system



Trust Factors

- Biometric face verification
- Liveness detection
- Document authenticity check
- Age and gender verification

Biometric Authentication

- Identity verification against historical data
- Duplicate check of the photo against database

The system evaluates the application data and if eligible, it sends for review by the operator.

Review by operator

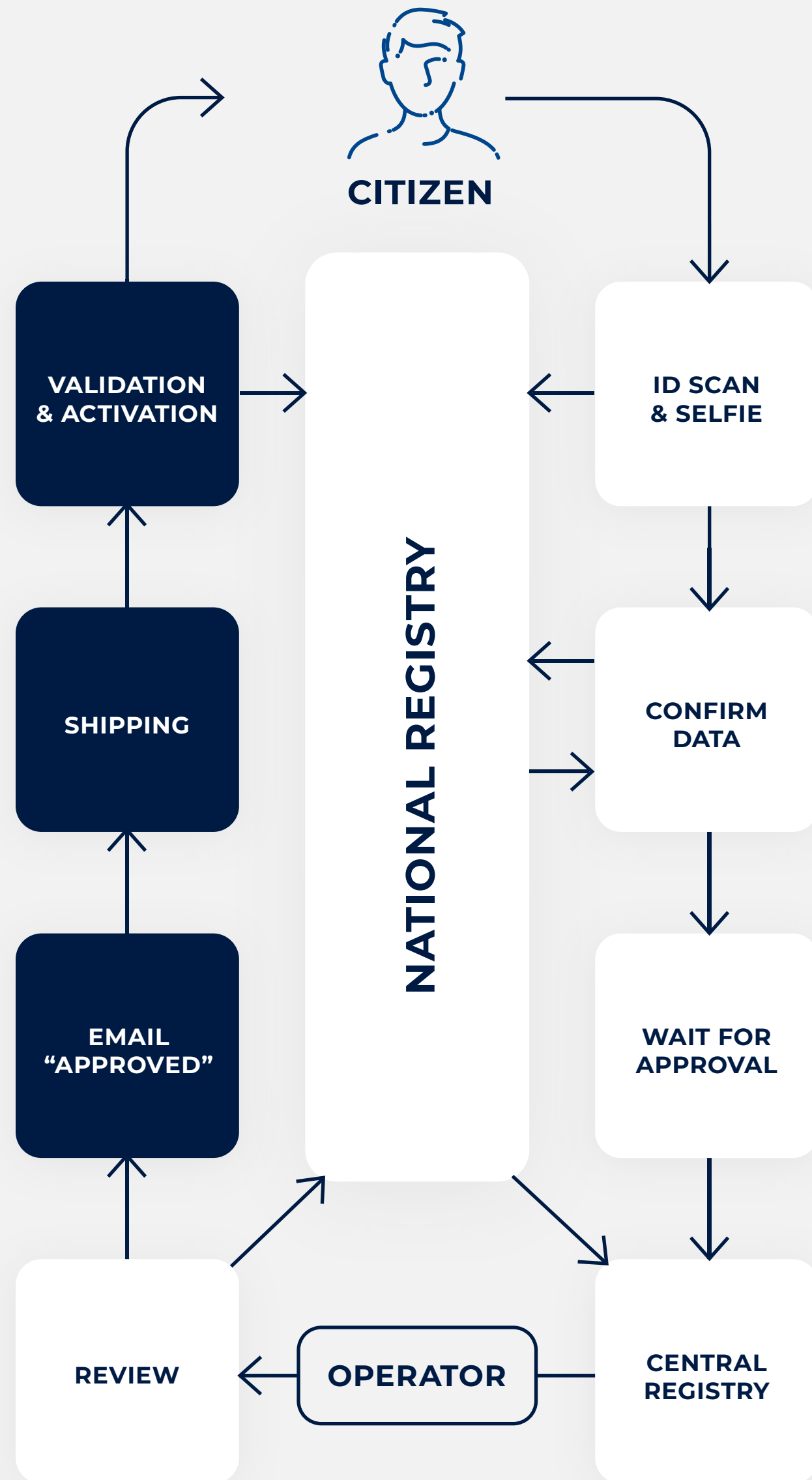


Operator reviews application data and...

- Rejects application if not eligible
- Requests to complete documentation or other data
- Approves the enrollment and proceeds with the issuance

Shipping and ID activation

Government App or Website



Notification



! New message
Your application
has been approved!

Shipping



New ID validation and activation



Selfie



ID Scan



Authorized!



innovatrics.com